

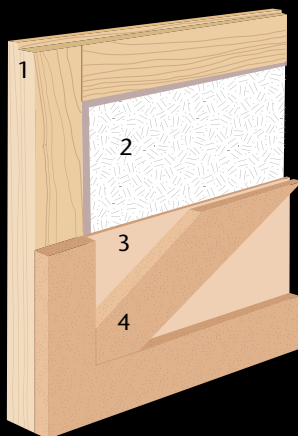
CAMBRIDGE SERIES

INSULATED WOOD COMPOSITE
OVERLAY CARRIAGE HOUSE DOORS

DOOR SHOWN IS PAINTED WITH SMOOTH PANEL



CONSTRUCTION DETAIL



- 1/8" interior hardboard skin (not shown)
- 1. Heavy-duty pine frame
- 2. 1 1/8" thick polystyrene core
- 3. 1/8" tempered hardboard exterior skin
- 4. 1/2" thick Extrira MDF overlay

ALSO AVAILABLE IN:



ROUGH SAWN PANEL
OPTION

GENERAL DOORS
Corporation

1 Monroe Street • PO Box 205 • Bristol, PA 19007-0205
215.788.9277 • Fax: 215.788.9450
www.general-doors.com • Email: sales@general-doors.com

QUALITY DOOR SOLUTIONS SINCE 1947

DECORATIVE HARDWARE

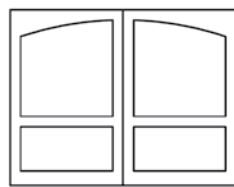
Nothing says custom door like General Doors' custom decorative hardware. Inspired by antique carriage door hardware, and available in wrought iron or flat black steel, this finishing touch can transform the look of your door – and even the look of your home.



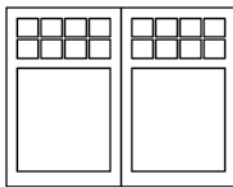
AVAILABLE DOOR DESIGNS



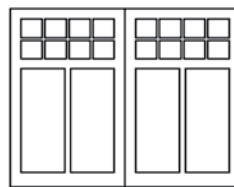
BARN STYLE



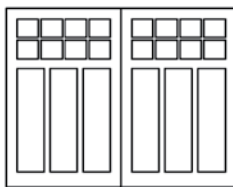
ARCH TOP BARN



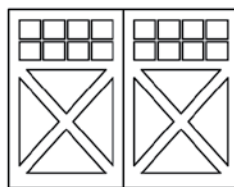
2 PANEL



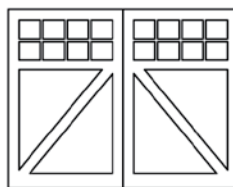
4 PANEL



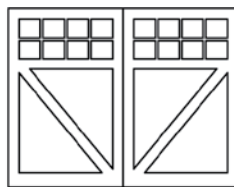
6 PANEL



X-BRACE



A-BRACE



V-BRACE

SIZES AVAILABLE

STANDARD WIDTHS:
8', 9', 10', 16' and 18'

STANDARD HEIGHTS:
6'6", 7'0", 7'6" and 8'0"

PAINTING

This is a paint grade wood product. All surfaces of each section should be painted with a good quality exterior paint prior to or immediately after installation.

CONSTRUCTION DETAILS

- Structural pine frame with 1-1/8" polystyrene core and hardboard skins provide an R-value of 6.0
- Choice of smooth or rough sawn hardboard exterior. Interior always smooth.
- Overlay designs are Extira – a high quality waterproof composite board
- Lite section overlays have moulded edges for distinctive appearance, solid sections have square edge overlays
- All sections supplied primed
- 6'-6" & 7'0 high doors are 3 sections
- 7'6 & 8'0 high doors are 4 sections

LITE OPTIONS

The lite section can have a great deal to do with the overall look of any garage door. The lite styles shown below can be matched with any door design, except for the Barn Style designs, which are solid only.



6 - LITE



6 - LITE ARCH



8 - LITE



8 - LITE ARCH



12 - LITE



12 - LITE ARCH



16 - LITE



16 - LITE ARCH