



Richardson-Wilcox

Premium Garage Doors



Family Safe **Elite**

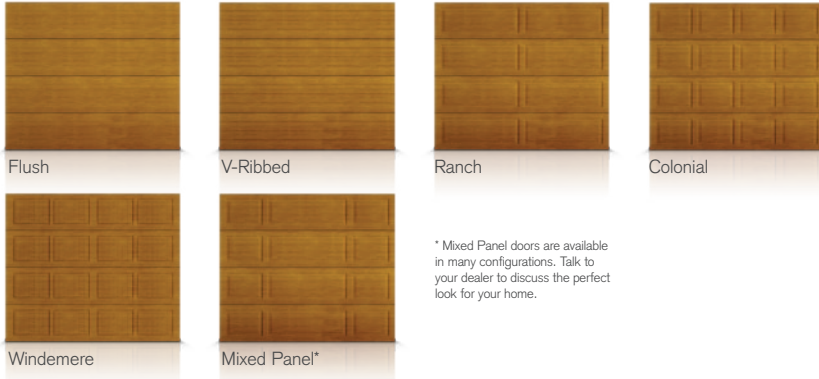
Stunning, wood-look, finger-protected garage doors.



Engineered for **life**

Your neighbors will have garage door envy.

Stunning, authentic woodgrain texture embossed on the panels has the look of wood but the strength of steel. Add beautiful decorative windows and choose one of three rich and warm wood-look colors. Six panels to choose from means a myriad of custom looks can be created to add timeless beauty and elegance to your home.



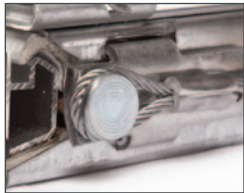
* Mixed Panel doors are available in many configurations. Talk to your dealer to discuss the perfect look for your home.

Not just another pretty face.

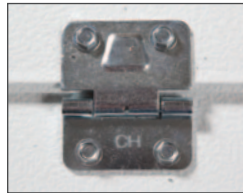
We make beautiful doors. We also care that what's behind them will keep your door worry and maintenance-free for years to come. In business since 1912, we have an established reputation for exceptional quality and unparalleled customer service. Our hardware components are made to the highest industry standards. Our finger-protection system helps prevent injury by keeping fingers out of section joints, inside and out. We believe in our doors and we back that up in writing with our LifeTimer™ warranties.



10-ball bearing rollers ensure years of smooth and quiet operation.



Tamper-resistant cable attachment cannot be released under tension, helping to prevent accidental injury.



Patented commercial-grade linear-type hinges have the highest strength-to-weight ratio in the industry.



Patented finger-protection system helps prevent fingers from getting pinched between section joints, inside and out.



Section joints have a dual seal, ensuring a tight fit and reducing air flow.



3" arctic-grade bottom weather seal helps protect your garage from the elements.

For additional features and benefits, talk to your dealer or visit rwdoors.com

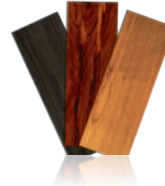
Professionally installed and serviced by:



Windows that wow.

Make a style statement with our wide selection of designer window options.*

* See the Richards-Wilcox Premium Windows brochure for complete details.



The color of luxury.

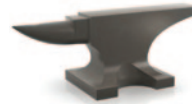
Three rich and warm wood-look colors showcase the authentic woodgrain embossing on our panels: golden oak, cherry and dark oak.



Love your handles.

Transform your door to a beautiful reproduction of the past by adding decorative hardware elements with the look and feel of hand-forged wrought iron.

* See the Richards-Wilcox Hardware brochure for complete details.



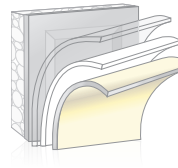
Steel is the new wood.

Authentic woodgrain texture embossed on panels gives you the aesthetic of wood without the cost or hassle of maintaining it.



Weather the storms.

Built to withstand many different weather conditions, our doors have a continuous polyurethane insulated core, arctic-grade bottom seal and dual-seal section joints to help reduce air flow and lower your energy costs.



Built to last.

Door sections are constructed from high-strength, rust-resistant galvanized steel and coated with a baked-on polyester paint finish. Which means your door will last a really, really long time.



Green comes standard.

Our Neufoam™ polyurethane insulation is zero ozone-depleting to help reduce greenhouse gas emissions. Woodgrain embossing simulates real hardwood without depleting our forests.



Peace of mind.

There are enough worries in life - your garage door shouldn't be one of them. When you choose Richards-Wilcox, you've chosen the best garage door you can buy and we'll back that up in writing with our LifeTimer™ Gold* warranty.

* Rust-through/delamination/hardware/springs: as long as you own your home. See warranty for complete terms and conditions.