



Richardson-Wilcox

Premium Garage Doors



Rockwood Series

Custom carriage house cedar overlay doors.

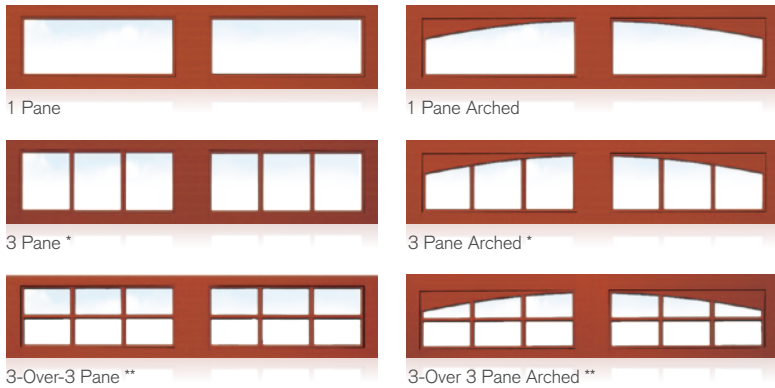


Engineered for beauty

Sophisticated style, unrivalled craftsmanship.

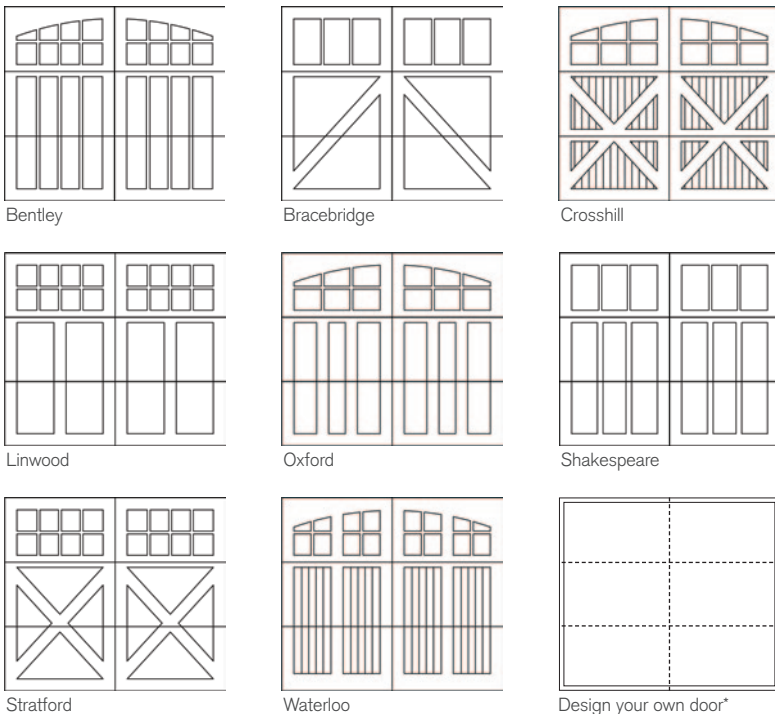
A Rockwood Series three-section carriage house door brings unparalleled warmth and individuality to your home. Custom crafted overlays of clear red cedar on our technologically-advanced, foam-insulated steel panels offer vintage style with unsurpassed structural integrity and a total door thickness of 2 3/8". Choose from eight historically-inspired panel options or design your own. Six classic window options provide additional ways to personalize your door, making a truly unique statement of elegance and luxury.

Window Options

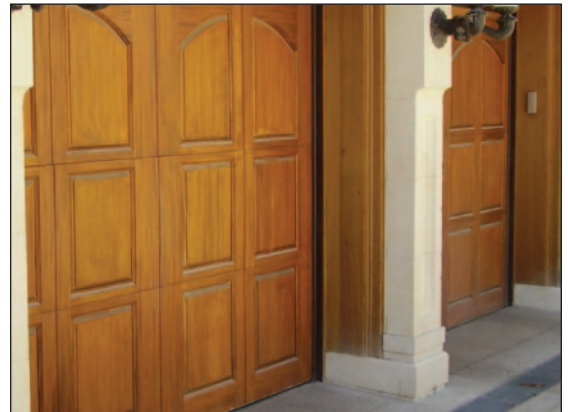


* 10' wide doors use a 4 pane pattern
 ** 10' wide doors use a 4-over-4 pattern

Panel Options



*Custom designs available. See dealer for details.



Engineered for life

The sky's the limit.

Handcrafted overlays of clear red cedar can be stained to enhance the richly grained wood's beauty and match your home's exterior detail. When painting your door, flush boards and overlays made of solid fir plywood offer a cost savings and no end of color options for a truly custom look.

V-Groove



Cedar boards are cut at a 45° angle and fit together to form a V-Groove. Available in 3" tongue-and-groove.

Flush



1/2" marine-grade solid fir plywood. Smooth surface provides a flat exterior surface for painted doors.

Not just another pretty face.

We make beautiful doors. We also care that what's behind them will keep your door worry and maintenance-free for years to come. In business since 1912, we have an established reputation for exceptional quality and unparalleled customer service. Our hardware components are made to the highest industry standards. Sections are constructed from high-strength galvanized steel. We believe in our doors and we back that up in writing with our LifeTimer™ warranties.



10-ball bearing rollers ensure years of smooth and quiet operation.



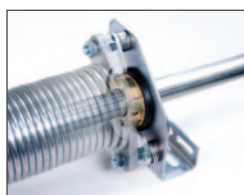
Tamper-resistant cable attachment cannot be released under tension, helping to prevent accidental injury.



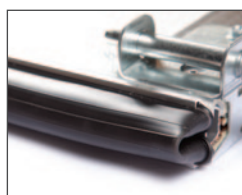
Patented commercial-grade linear-type hinges have the highest strength-to-weight ratio in the industry.



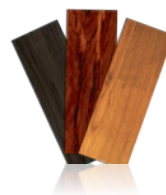
High cycle galvanized torsion spring and shaft for years of trouble-free operation.



Optional spring break protection safety device prevents door from dropping more than 1' in event of counterbalance failure.



3" arctic-grade bottom weather seal helps protect your garage from the elements.



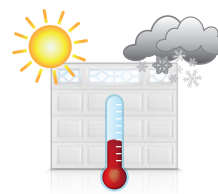
Custom color.

With both paint and stain grade options available, your door can be customized to match your home's exterior styling.



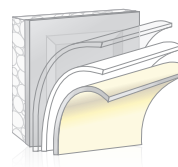
Love your handles.

Transform your door to a beautiful reproduction of the past by adding decorative hardware elements with the look and feel of hand-forged wrought iron.



Weather the storms.

Built to withstand many different weather conditions, our doors have a continuous polyurethane insulated core, arctic-grade bottom seal and dual-seal section joints to help reduce air flow and lower your energy costs.



Built to last.

Cedar overlays are bonded to door sections constructed from high-strength, rust-resistant galvanized steel and coated with a baked-on polyester paint finish. Which means your door will last a really, really long time.



Green comes standard.

Our Neufoam™ polyurethane insulation is zero ozone-depleting to help reduce greenhouse gas emissions.



Peace of mind.

There are enough worries in life - your garage door shouldn't be one of them. When you choose Richards-Wilcox, you've chosen the best garage door you can buy and we'll back that up in writing with our LifeTimer™ Plus* warranty.

* Rust-through/delamination: as long as you own your home. Hardware/springs: 3 years. See warranty for complete terms and conditions.

For additional features and benefits, talk to your dealer or visit rwdoors.com



For additional premium garage door choices,
please contact your local RW dealer.

Professionally installed and serviced by:

Richards-Wilcox Premium Garage Doors – Engineered for life
5100 Timberlea Boulevard, Mississauga, Ontario Canada L4W 2S5

Telephone: (905) 625-0037 | Fax: (905) 625-0057 | Email: info@rwdoors.com

www.rwdoors.com